

Biology » Human Anatomy



Model: ES50001
Name: 9 Stages of Gestation



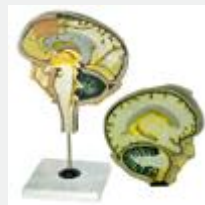
Model: ES50002
Name: Artery and Vein Anatomy



Model: ES50003
Name: Artery C.S. 4 stages



Model: ES50004
Name: Bone Structure Model



Model: ES50006
Name: Brain Section



Model: ES50007
Name: Bronchus C.S. 4 Stages



Model: ES50008
Name: Colon C.S. 4 stages



Model: ES50009
Name: Colon Model



Model: ES50011
Name: Digestive System Tissue Anatomy



Model: ES50012
Name: Eye Retina Anatomy



Model: ES50013
Name: Fertilization Stages and Embryo Development



Model: ES50005
Name: Human Brain with Arteries Life Size 8 Parts



Model: ES50010
Name: Human Brain Life Size 4 Parts



Model: ES50015
Name: Human Circulatory System Half Life Size



Model: ES50025
Name: Human Digestive System Life Size 2 Parts



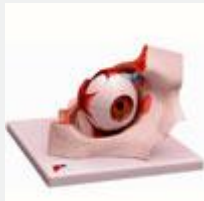
Model: ES50030
Name: Human Ear 2x Life Size 3 Parts



Model: ES50035
Name: Human Ear 3x Life Size 6 Parts



Model: ES50036
Name: Human Ear Giant 5x Life Size



Model: ES50040
Name: Human Eye with Orbit 3x Life Size 9 Parts



Model: ES50045
Name: Human Eye 5x Life Size 6 Parts



Model: ES50050
Name: Human Eye Functional for Demo



Model: ES50070
Name: Human Head and Neck Life Size Longitudinal Section



Model: ES50065
Name: Human Head with Brain Life Size 3 Parts



Model: ES50075
Name: Human Head Life Size Median Section



Model: ES50080
Name: Human Heart 2.5x Life Size 2 Parts



Model: ES50085
Name: Human Heart 5x Life Size 7 Parts



Model: ES50090
Name: Human Heart Life Size 2 Parts



Model: ES50100
Name: Human Kidney with Rear Organs 2 Parts



Model: ES50095
Name: Human Kidney with Renal and Glomerulus



Model: ES50105
Name: Human Kidney with Vessels Life Size 2 Parts



Model: ES50110
Name: Human Larynx Life Size 3 Parts



Model: ES50115
Name: Human Liver with Gall Bladder



Model: ES50125
Name: Human Lung Right Side Life Size 2 Parts



Model: ES50014
Name: Human Lungs 7 Parts



Model: ES50130
Name: Human Lungs with Heart and Larynx Life Size 5 Parts



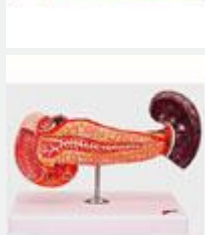
Model: ES50135
Name: Human Lungs Functional for Demo



Model: ES50140
Name: Human Nervous System Half Life Size



Model: ES50145
Name: Human Neuron 2 Parts



Model: ES50156
Name: Human Pancreas Duodenum and Spleen



Model: ES50225
Name: Human Pelvis & Urinary Tracts (Male & Female)



Model: ES50157
Name: Human Pelvis Female



Model: ES50158
Name: Human Pelvis Female with Mature Foetus



Model: ES50159
Name: Human Pelvis Male



Model: ES50160
Name: Human Respiratory System



Model: ES50165
Name: Human Respiratory System with Magnified Alveolus



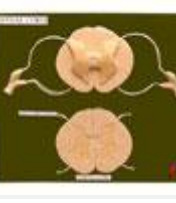
Model: ES50175
Name: Human Skeleton Half Life Size With Stand



Model: ES50180
Name: Human Skeleton Life Size With Stand



Model: ES50185
Name: Human Skin 75x Life Size



Model: ES50190
Name: Human Spinal Cord Transverse Section



Model: ES50195
Name: Human Stomach 1.5x Life Size 2 Parts



Model: ES50214
Name: Human Teeth Full Upper and Lower Jaw



Model: ES50215
Name: Human Teeth Half Upper and Lower Jaw



Model: ES50155
Name: Human Teeth Hygiene Model



Model: ES50170
Name: Human Teeth Set of 5 10x Life Size 10 Parts



Model: ES50120
Name: Human Tooth Lower Molar with Caries



Model: ES50200
Name: Human Torso Half Life Size None Sex Genitalia 15 Parts



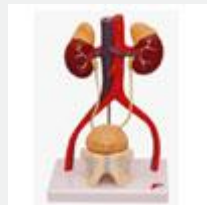
Model: ES50210
Name: Human Torso Life Size Sexless 12 Parts



Model: ES50204
Name: Human Torso Life Size Tri-Sex 18 Parts



Model: ES50205
Name: Human Torso Life Size Tri-Sex 21 Parts



Model: ES50220
Name: Human Urinary System Life Size Male



Model: ES50016
Name: Kindey L.S. Anatomy



Model: ES50017
Name: Muscle Fibre Anatomy



Model: ES50150
Name: Nose and Olfactory 4x Life Size



Model: ES50018
Name: Nose with Parasasal Sinuses



Model: ES50019
Name: Pelvis with Testicles



Model: ES50021
Name: Rectum Model



Model: ES50022
Name: Spinal Cord with Nerve Endings



Model: ES50023
Name: Type of Dental Diseases